



**2.º Encontro Nacional de
Investigação Clínica e Inovação
Biomédica – May 23, 2023**

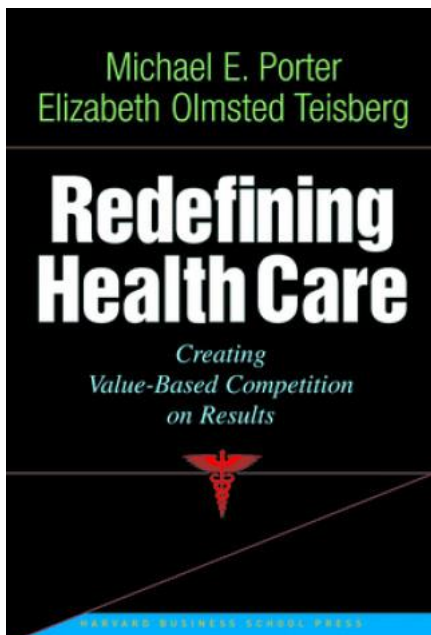
Anne Geubelle

O Valor em Saúde e a importância da inovação biomédica

INTRODUCTION

- **What is Value Based Healthcare and Why it is becoming so popular?**
- **Crisis of the healthcare system**
- **“VBHC organizational Framework” Vs “RWE Framework” – How to foster innovation?**

What is VBHC and why it is becoming so popular?

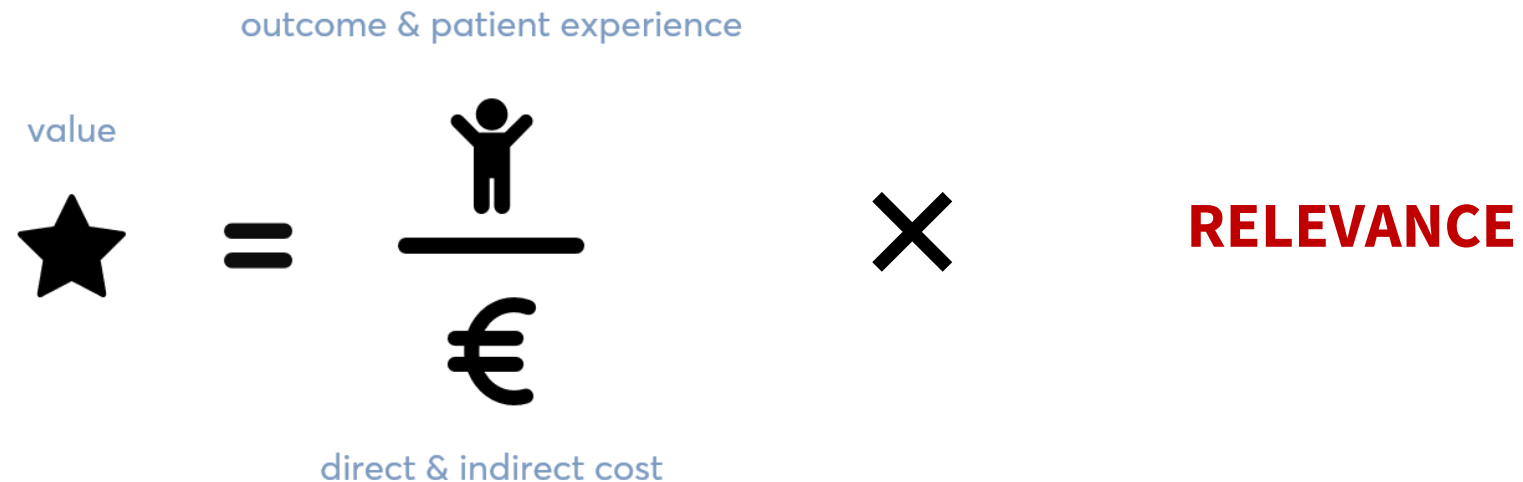


Publication of the value chain concept - new theoretical dynamics – Value Based Healthcare (Saúde baseada em valor)

This theory brings with it **two major concerns** : more **accessible costs** and **better patient outcomes**, in other words, quality patient outcomes.

What is VBHC and why it is becoming so popular?

The approach proposed by Porter foresees the reorganization of care assistance around the **clinical conditions** or population segment, monitoring of outcomes and costs and changing the remuneration model in order to stop remunerating by volume and started to remunerate for the outcomes obtained in the treatment.



What is VBHC and why it is becoming so popular?



The performance **problems** of healthcare systems is still **persistente**



Increase in adoption of Value based healthcare models around the world



Crisis of the Healthcare systems

- **Crisis of Value**
- **Crisis of evidence**
- **Crisis of purpose**

Crisis of the Healthcare systems

Crisis of Value

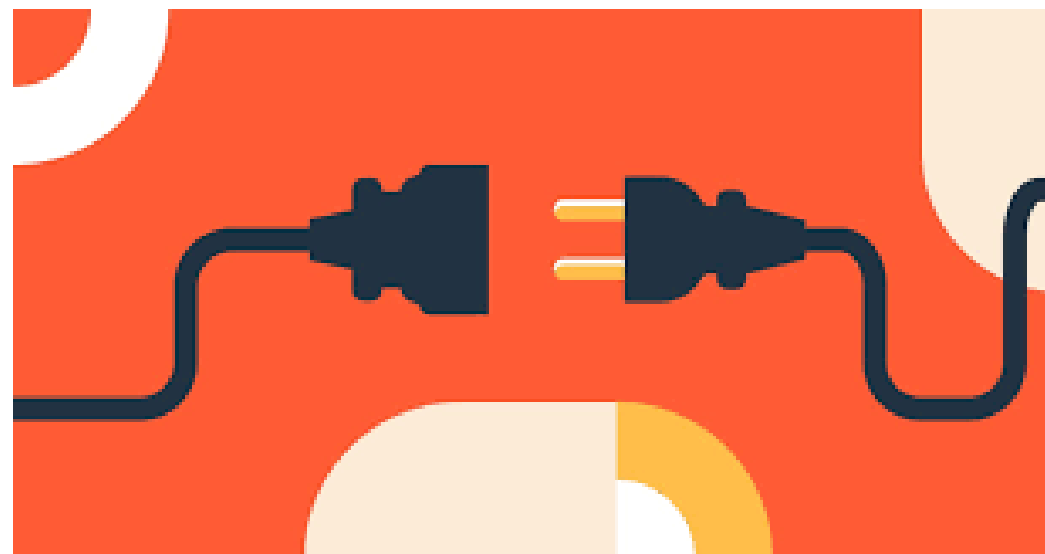
Based on data from OECD, we estimate that health care **costs**, as a percentage of GDP, across 36 OECD member countries **grew** from **9%** in 2000 to **12%** in 2019.



Crisis of the Healthcare systems

Crisis of evidence

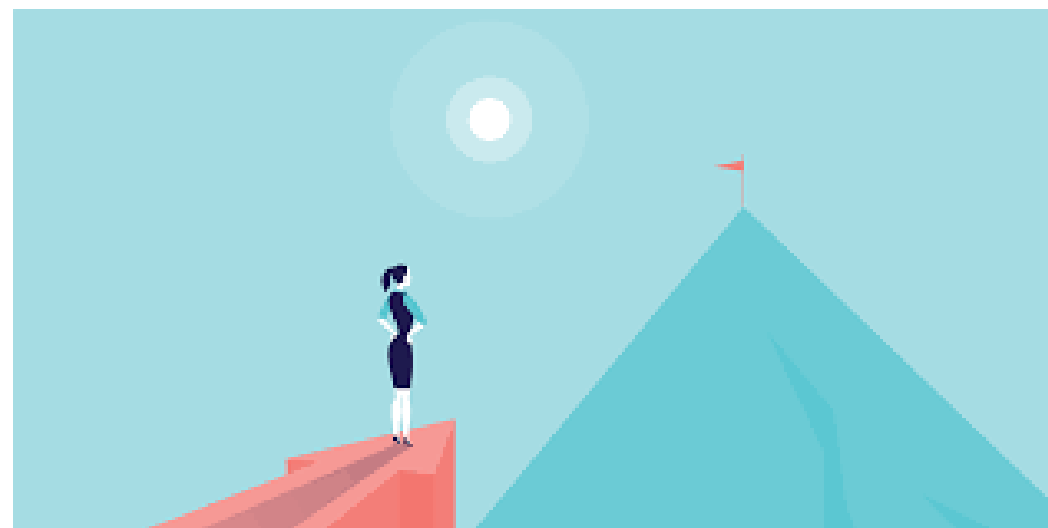
Growing **disconnection**
between **research** and **clinical**
practice



Crisis of the Healthcare systems

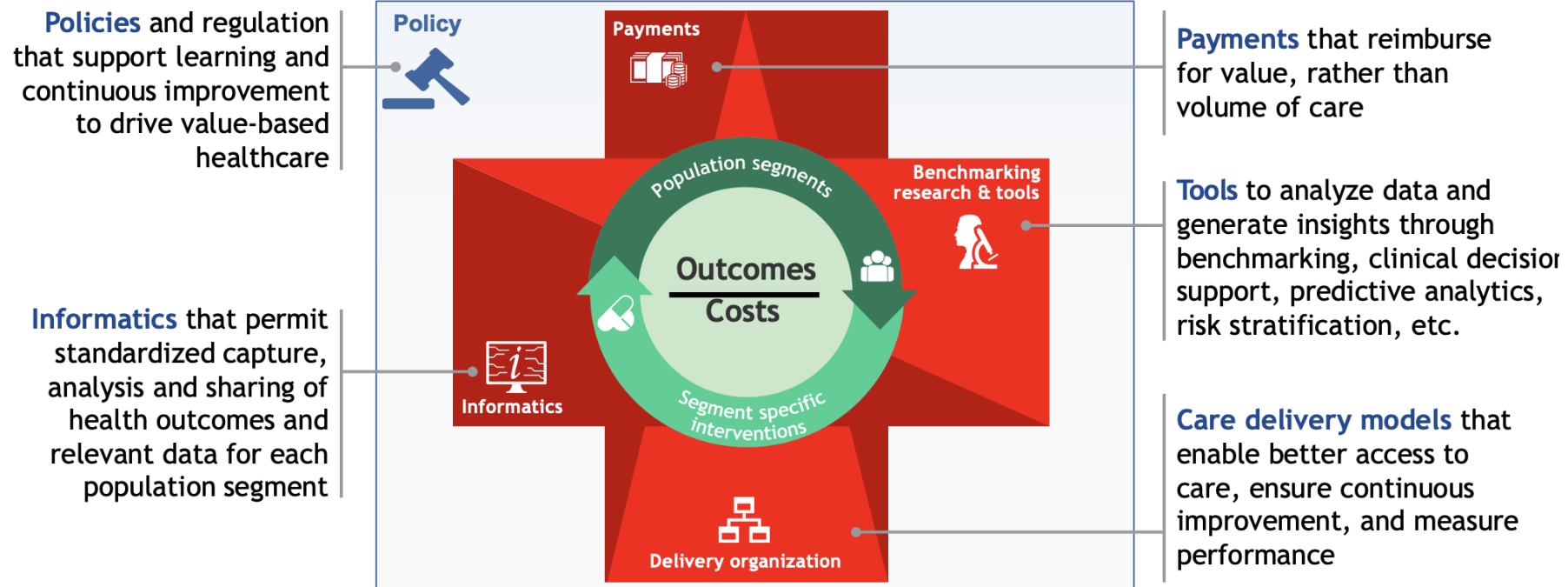
Crisis of purpose

Growing **disconnexion** between the **values** that draw people to work in the health care sector and the **reality** of their experience working in it



“VBHC organizational Framework” Vs “RWE Framework”

Value-based health care is about improving outcomes that matter to patients at lower cost



1 Source: World Economic Forum

“VBHC organizational Framework” Vs “RWE Framework”



What are the synergies
between VBHC
Organisational Framework
and RWE Framework?

- Patient-centeredness
- Measurement and evaluation
- Continuous Improvements
- Evidence generation
- Decision making and Ressources allocation
- Stakeholders engagement

CONCLUSION

By integrating the RWE framework into the VBHC organizational framework, healthcare organizations can **leverage real-world data** to inform decision-making, **enhance measurement and evaluation**, **foster continuous improvement and innovation**, and ultimately **deliver higher value care to patients**.

The combination of these frameworks enables a more patient-centered, evidence-based, and sustainable healthcare system. ✓

OBRIGADA !

www.prologica.pt

