

# 2º Encontro Nacional de Investigação Clínica & Inovação Biomédica

## Investigação Clínica – Desafios e Oportunidades

Capacitar os Centros de Investigação Clínica nos Hospitais

José Dinis

# Capacitar os Centros de Investigação Clínica nos Hospitais

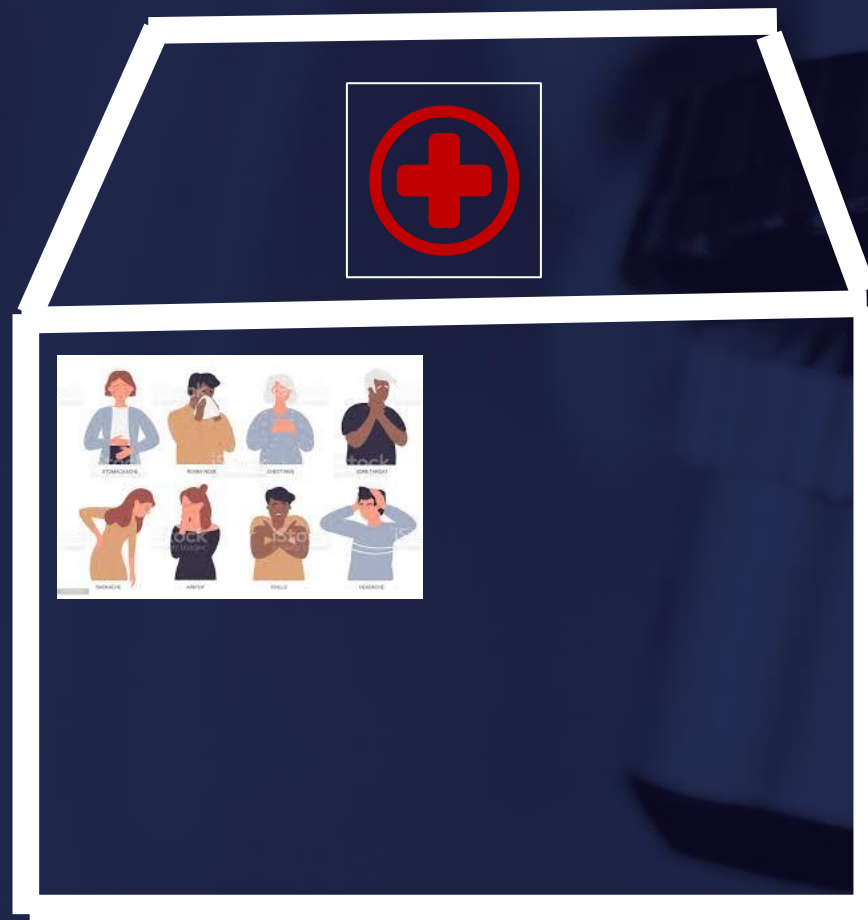
## Investigação Clínica

- Ensaio Clínicos (indústria; académicos)
- Estudos Clínicos
- Outcomes Research
- Epidemiológicos

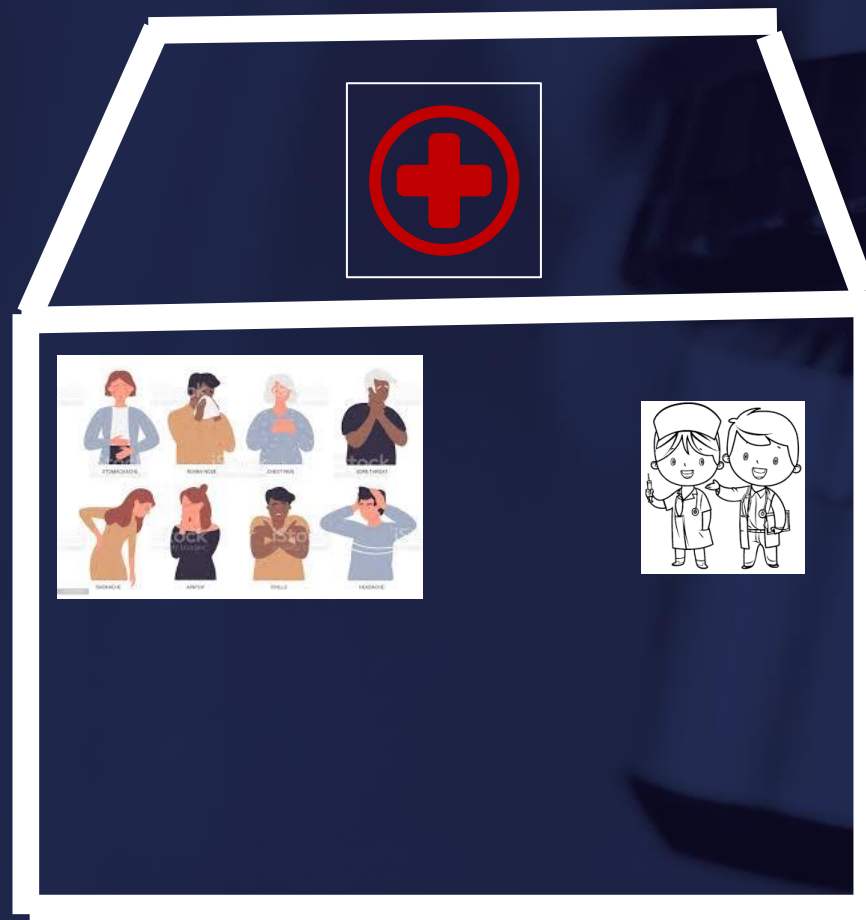
# Capacitar os Centros de Investigação Clínica nos Hospitais



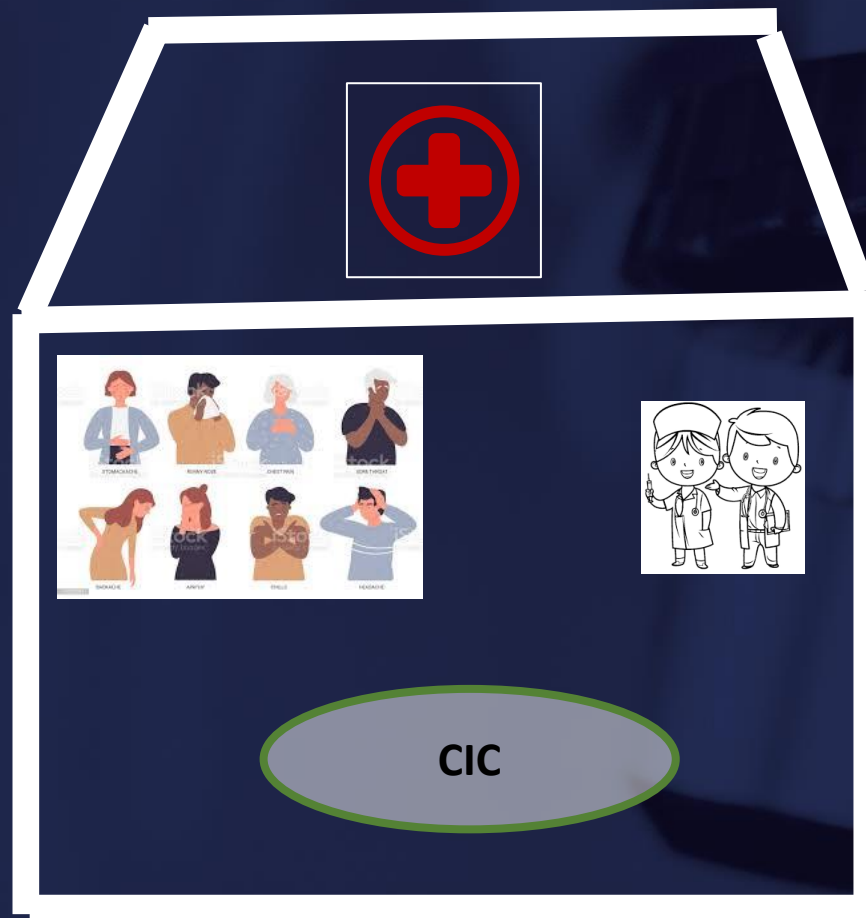
# Capacitar os Centros de Investigação Clínica nos Hospitais



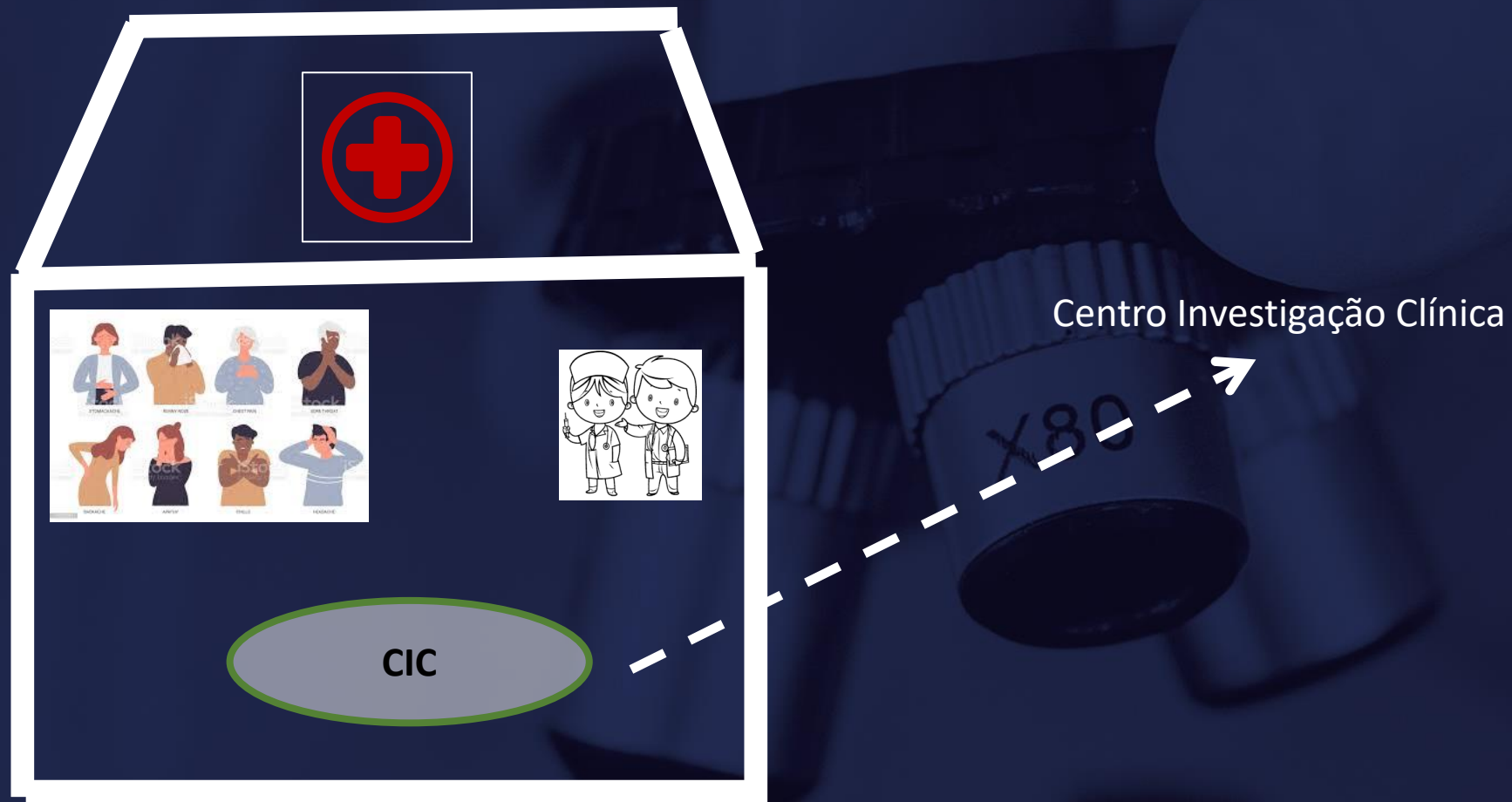
# Capacitar os Centros de Investigação Clínica nos Hospitais



# Capacitar os Centros de Investigação Clínica nos Hospitais



# Capacitar os Centros de Investigação Clínica nos Hospitais



# Capacitar os Centros de Investigação Clínica nos Hospitais

## Centro de Investigação Clínica (CIC)

- Análise,
- Implementação,
- Condução
- Gestão financeira



# Capacitar os Centros de Investigação Clínica nos Hospitais

## VISÃO

# Capacitar os Centros de Investigação Clínica nos Hospitais



## 2º Encontro Nacional de Investigação Clínica & Inovação Biomédica

# Capacitar os Centros de Investigação Clínica nos Hospitais

## MISSÃO

# Mission Statement

## Clinical Research Unit

### Facilitate clinical trial deployment

- Streamline contract and budgeting negotiation
- Trial start up

### Promote clinical trials as part of routine clinical practice

- Monitor and support clinical trial activities
- Quality and compliance oversight

### Increase awareness of clinical trials as relevant tools for patient care access to new treatments

- Quality surrogate marker
- Healthcare professionals satisfaction
- Economical relevance



# Early Phase Clinical Trials Unit

## Objectives



To promote **patients access to innovation** through clinical research



To implement and develop a **molecular screening program** to expand the opportunities of biomarker driven clinical trial access

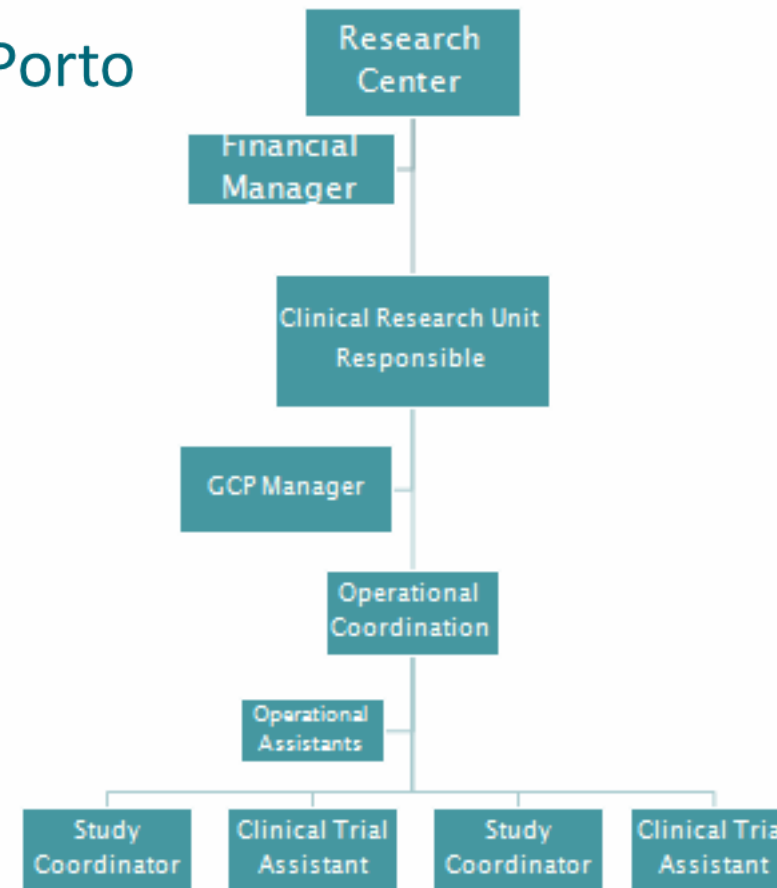


To promote **scientific collaboration with academic/non-commercial partners, biotech and pharma companies**, focusing on translational research and early drug development

# Organization Breakdown Structure

## Clinical Research Unit

- Research as a founding tenet of IPO Porto
- Created in 2006
- Professional Trial Support Staff
  - Head of Unit
  - Financial Officer
  - General Manager
  - 1 Operational Managers
  - 6 Study Coordinators
  - 5 Pharmacists
  - 5 Clinical Trial Assistants
  - 2 Operational Assistants
  - Trial Support Area of 527 m<sup>2</sup>



# Capacitar os Centros de Investigação Clínica nos Hospitais

## Centro de Investigação Clínica - Infraestrutura

- Gabinetes Coordenação
- Farmácia Ensaaios Clínicos
- Hospital de Dia / Enfermaria (EC)
- Espaço para Consultas (EC)

# Capacitar os Centros de Investigação Clínica nos Hospitais

## Centro de Investigação Clínica - Infraestrutura

### - Recursos Humanos

Coordenadoras

Assistente de coordenação

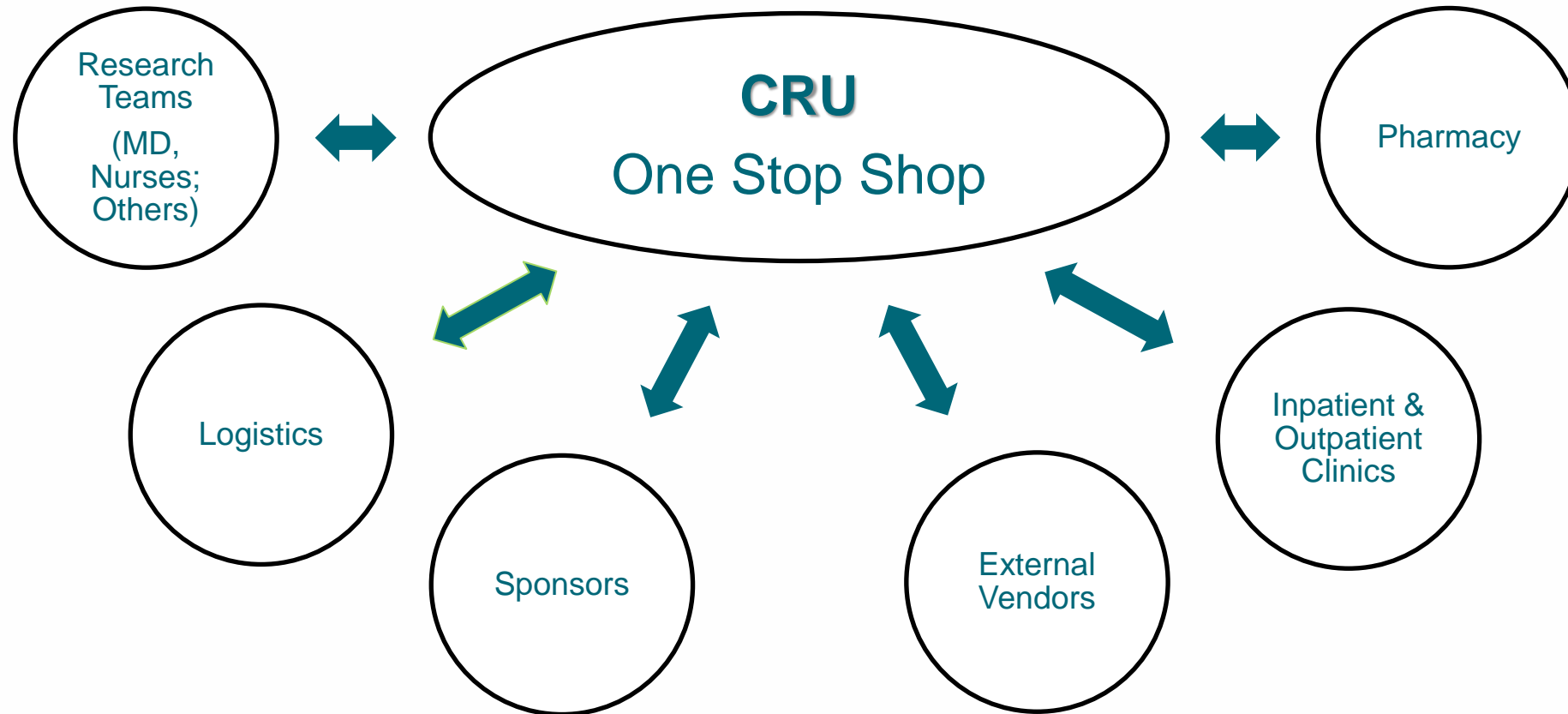
Assistentes operacionais

Gestão financeira

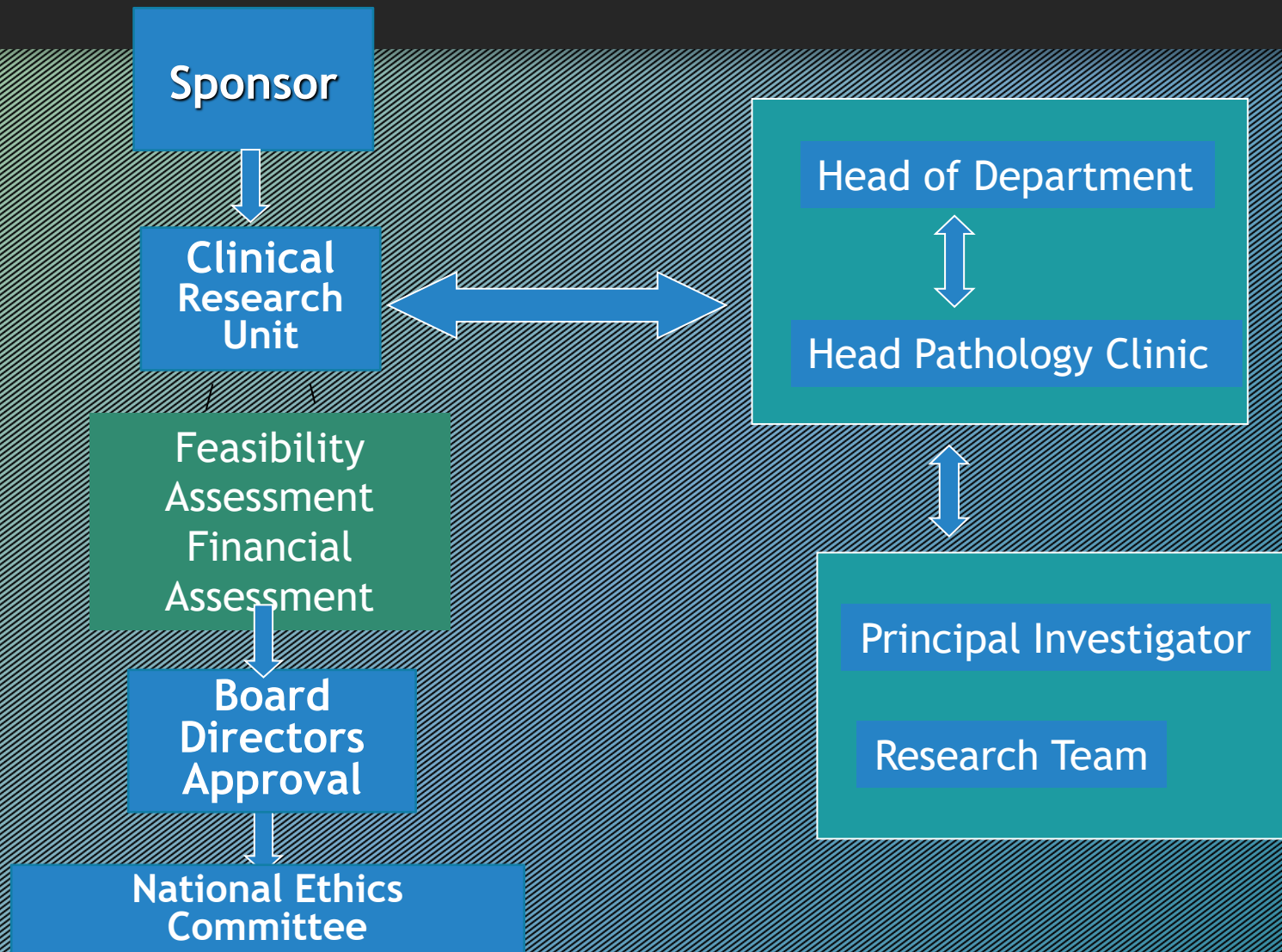


# Organization Breakdown Structure

## Clinical Research Unit



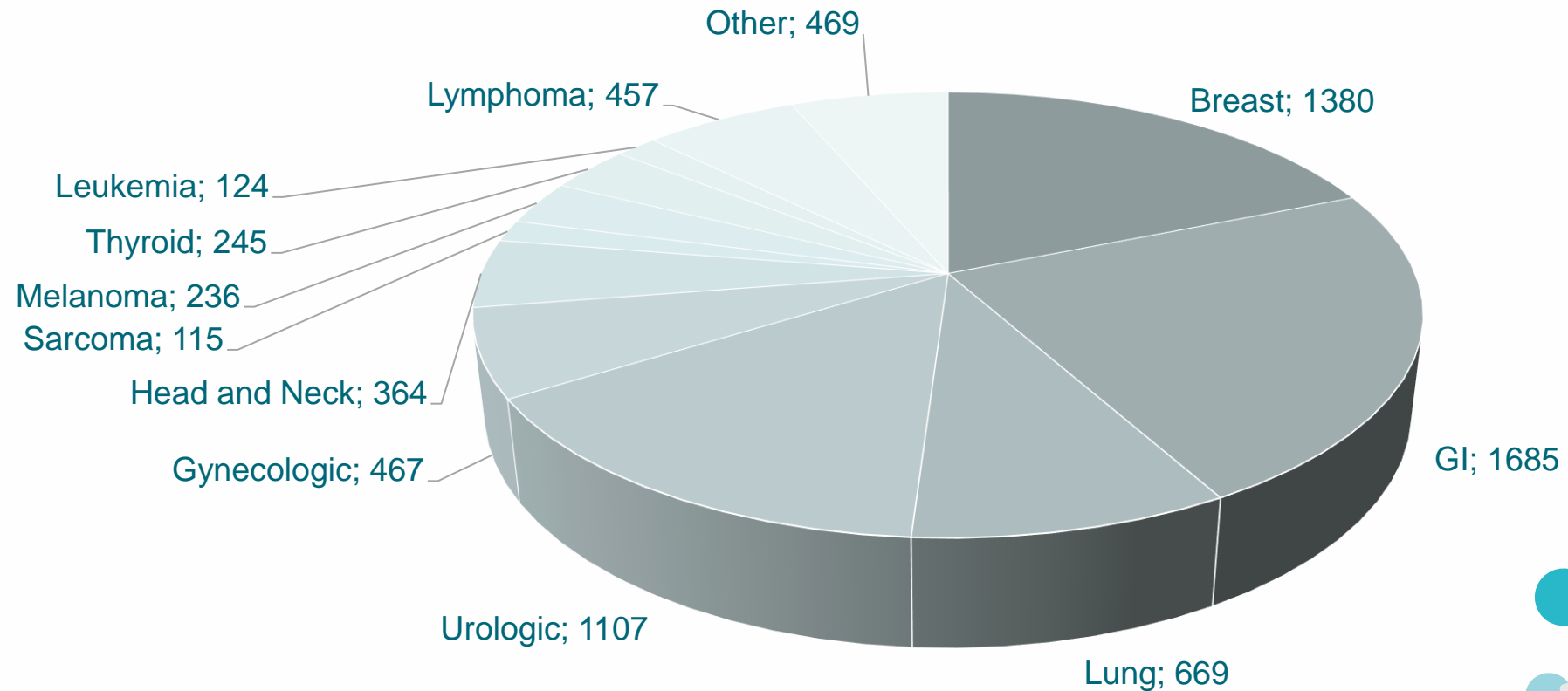
# Organizational Structure



# Current Status

## IPO Porto as a Reference Site for Clinical Research

- New patients = 7269 | 2018

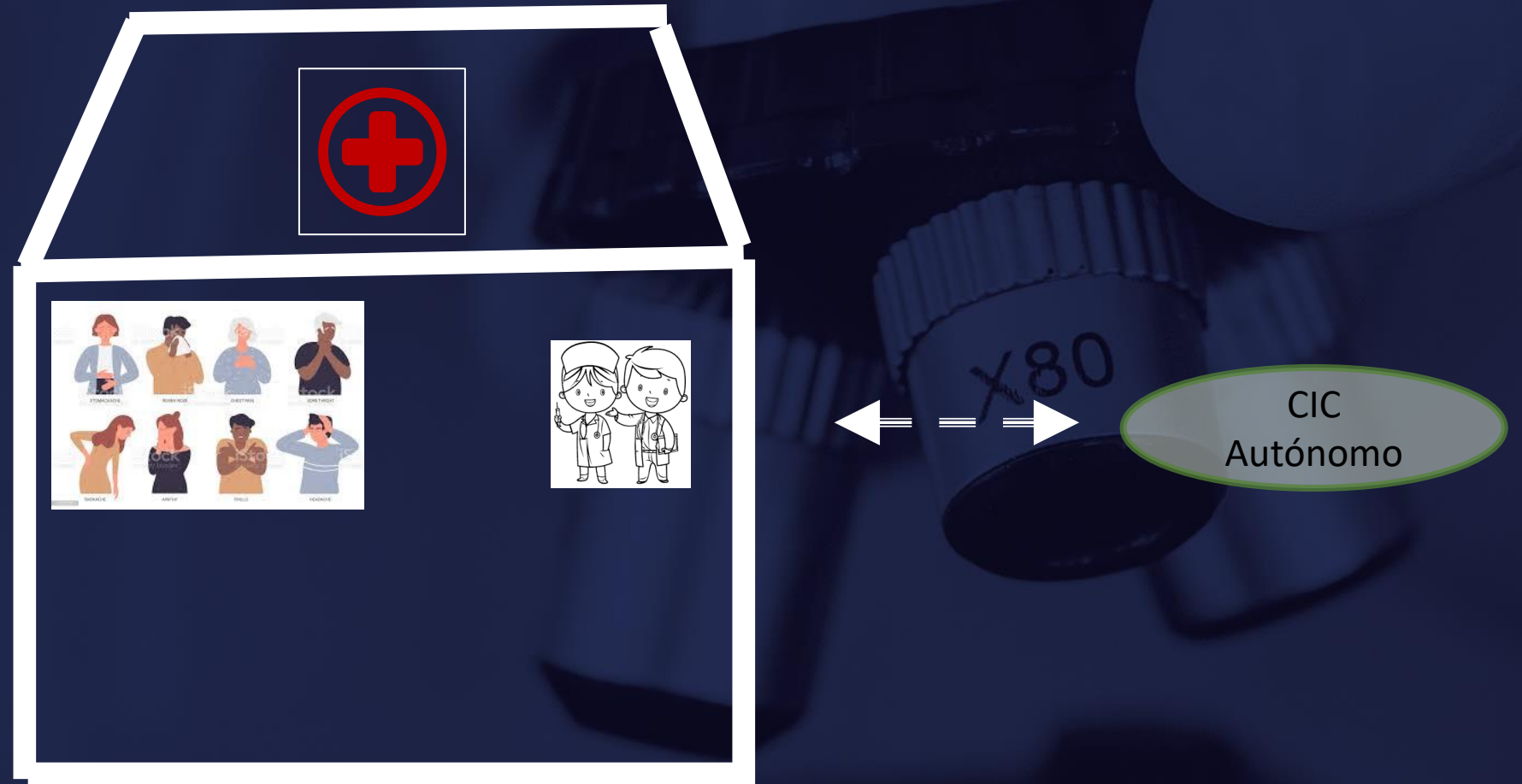


# Capacitar os Centros de Investigação Clínica nos Hospitais

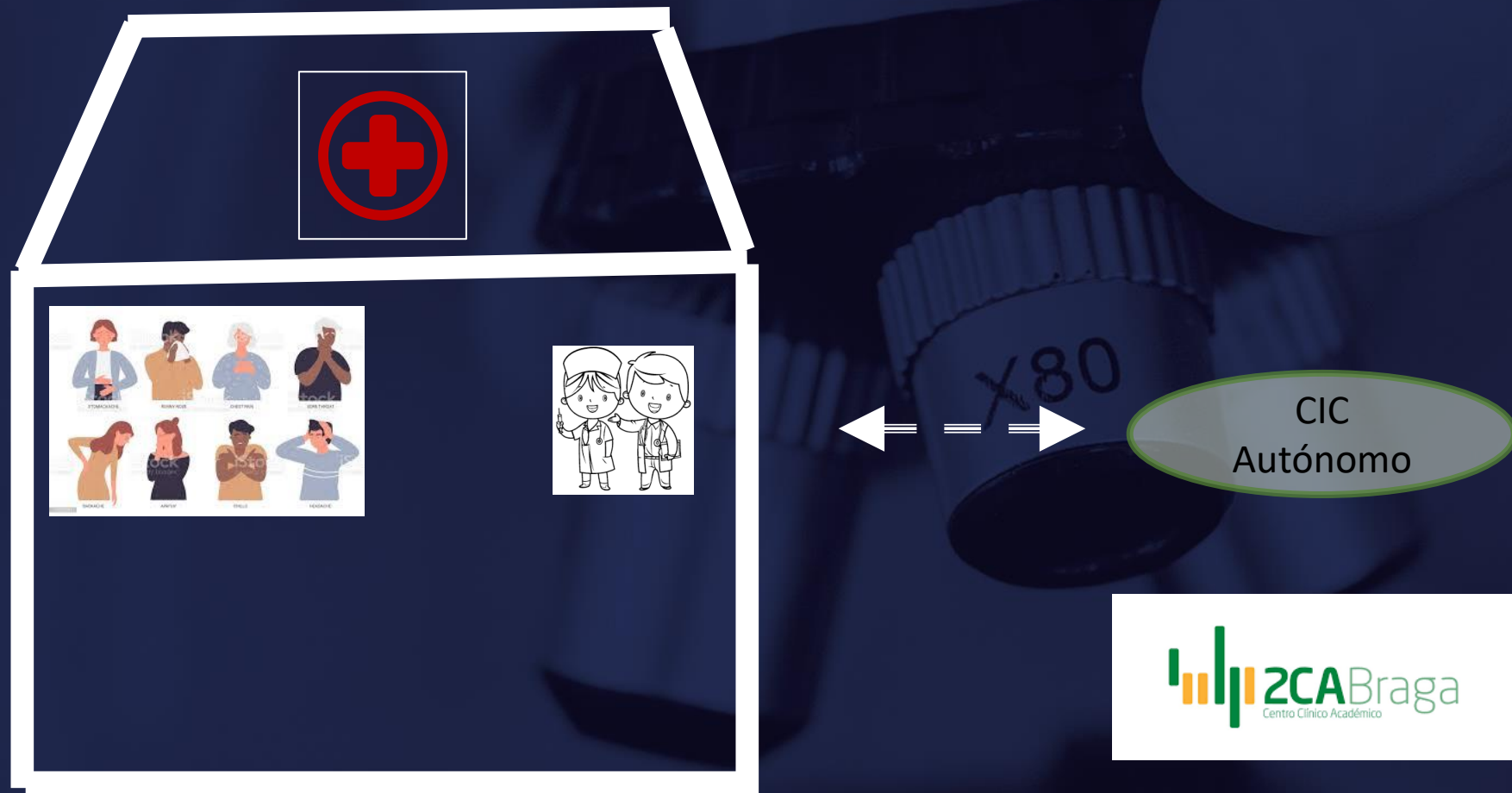
## Estratégias de Recrutamento

- Bases de dados do Hospital
- Referenciação
- Website Institucional com ECs em recrutamento

# Capacitar os Centros de Investigação Clínica nos Hospitais



# Capacitar os Centros de Investigação Clínica nos Hospitais





# Obrigado

